

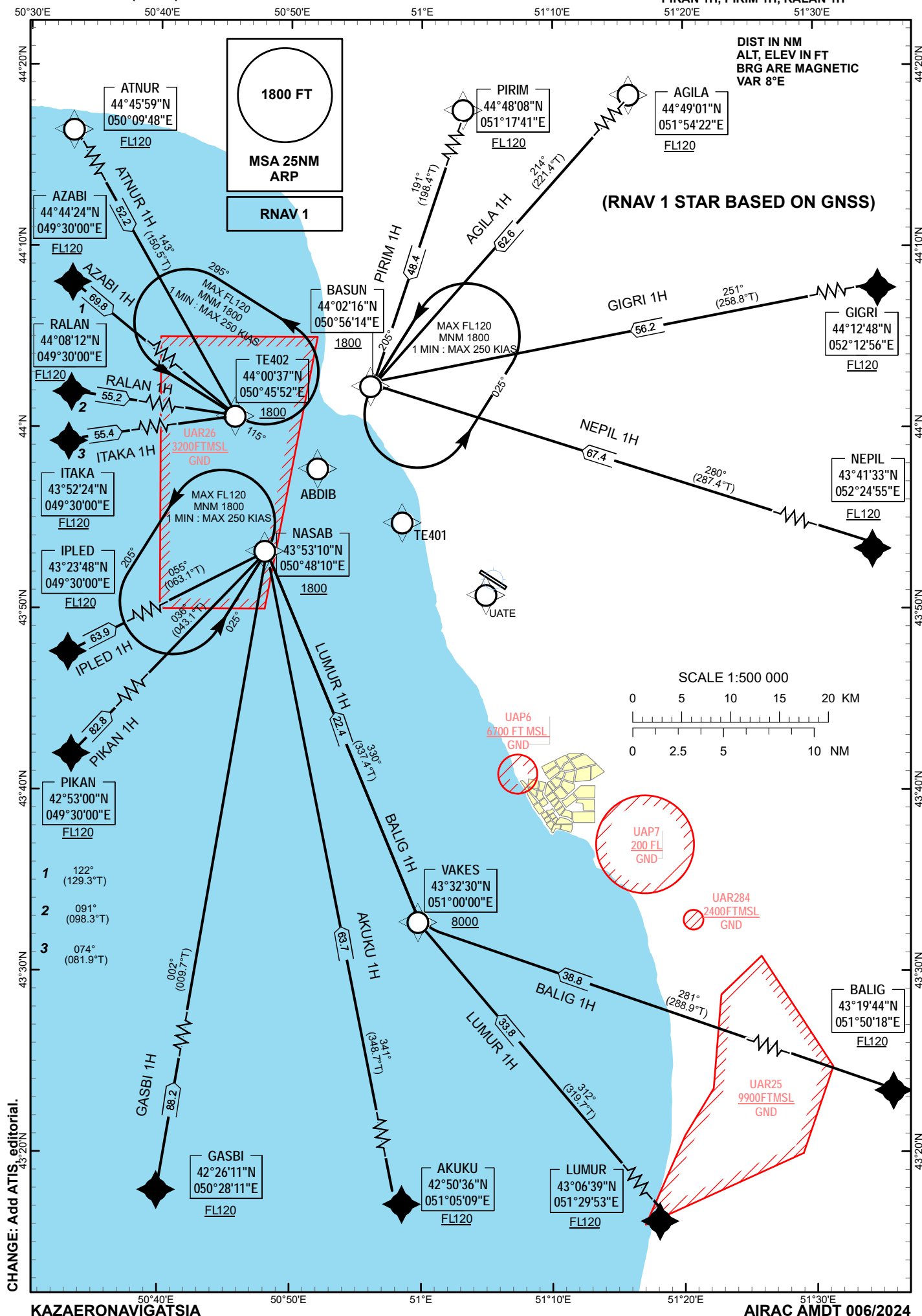
RNAV
STANDARD ARRIVAL CHART
INSTRUMENT (STAR) - ICAO

TRANSITION ALTITUDE
10000 FT

AKTAU TOWER 120.7
AKTAU ATIS (EN) 130.1
AKTAU ATIS (RU) 126.2

AGILA 1H, AKUKU 1H, ATNUR 1H, AZABI 1H, AKTAU
BALIG 1H, GASBI 1H, GIGRI 1H, IPLED 1H, ITAKA 1H, LUMUR 1H, NEPIL 1H,
PIKAN 1H, PIRIM 1H, RALAN 1H

AKTAU
RWY 11



TABULAR DESCRIPTION

RNAV 1 STAR RWY 11										
Serial Number	Waypoint ID	Path Descriptor	Flyover	Course °M (°T)	Distance (NM)	Turn Direction	Altitude (ft)	Speed (kts)	VPA/TCH	Navigation Specification
010	PIRIM	IF	–	–	–	–	+FL120	–	–	RNAV 1
020	BASUN	TF	–	191(198.4)	48.4	–	+1800	–	–	RNAV 1
010	AGILA	IF	–	–	–	–	+FL120	–	–	RNAV 1
020	BASUN	TF	–	214 (221.4)	62.6	–	+1800	–	–	RNAV 1
010	GIGRI	IF	–	–	–	–	+FL120	–	–	RNAV 1
020	BASUN	TF	–	251 (258.8)	56.2	–	+1800	–	–	RNAV 1
010	NEPIL	IF	–	–	–	–	+FL120	–	–	RNAV 1
020	BASUN	TF	–	280 (287.4)	67.4	–	+1800	–	–	RNAV 1
010	BALIG	IF	–	–	–	–	+FL120	–	–	RNAV 1
020	VAKES	TF	–	281 (288.9)	38.8	–	+8000	–	–	RNAV 1
030	NASAB	TF	–	330 (337.4)	22.4	R	+1800	–	–	RNAV 1
010	LUMUR	IF	–	–	–	–	+FL120	–	–	RNAV 1
020	VAKES	TF	–	312 (319.7)	33.8	–	+8000	–	–	RNAV 1
030	NASAB	TF	–	330 (337.4)	22.4	R	+1800	–	–	RNAV 1
010	AKUKU	IF	–	–	–	–	+FL120	–	–	RNAV 1
020	NASAB	TF	–	341(348.7)	63.7	–	+1800	–	–	RNAV 1
010	GASBI	IF	–	–	–	–	+FL120	–	–	RNAV 1
020	NASAB	TF	–	002 (009.7)	88.2	–	+1800	–	–	RNAV 1
010	PIKAN	IF	–	–	–	–	+FL120	–	–	RNAV 1
020	NASAB	TF	–	036 (043.1)	82.8	–	+1800	–	–	RNAV 1
010	IPLD	IF	–	–	–	–	+FL120	–	–	RNAV 1
020	NASAB	TF	–	055 (063.1)	63.9	–	+1800	–	–	RNAV 1
010	ITAKA	IF	–	–	–	–	+FL120	–	–	RNAV 1
020	TE402	TF	–	074 (081.9)	55.4	–	+1800	–	–	RNAV 1
010	RALAN	IF	–	–	–	–	+FL120	–	–	RNAV 1
020	TE402	TF	–	091 (098.3)	55.2	–	+1800	–	–	RNAV 1
010	AZABI	IF	–	–	–	–	+FL120	–	–	RNAV 1
020	TE402	TF	–	122 (129.3)	69.8	–	+1800	–	–	RNAV 1
010	ATNUR	IF	–	–	–	–	+FL120	–	–	RNAV 1
020	TE402	TF	–	143 (150.5)	52.2	–	+1800	–	–	RNAV 1

Path Descriptor	Waypoint ID	Inbound course °M (°T)	Leg distance	Tim-ing(min.)/Waypoint Distance (NM)	Turn direction	Minimum altitude	Maximum altitude	Speed limit	Navigation specification
HM	TE402	115 (122.4)	–	1/–	L	1800	FL120	-250	RNAV1
HM	NASAB	025 (032.6)	–	1/–	L	1800	FL120	-250	RNAV1
HM	BASUN	205 (212.7)	–	1/–	L	1800	FL120	-250	RNAV1

WAYPOINT LIST

RNAV 1 STAR RWY11	
Waypoint Identifier	Coordinates
AGILA	444901.0N 0515422.0E
AKUKU	425036.0N 0510509.0E
ATNUR	444559.0N 0500948.0E
AZABI	444424.0N 0493000.0E
BALIG	431944.0N 0515018.0E
BASUN	440216.0N 0505613.9E
GASBI	422611.0N 0502811.0E
GIGRI	441248.0N 0521256.0E
IPLD	432348.0N 0493000.0E
ITAKA	435224.0N 0493000.0E
LUMUR	430639.0N 0512953.0E
NASAB	435310.2N 0504810.1E
NEPIL	434133.0N 0522455.0E
PIKAN	425300.0N 0493000.0E
PIRIM	444808.0N 0511741.0E
RALAN	440812.0N 0493000.0E
TE402	440036.8N 0504552.2E
VAKES	433230.0N 0510000.0E